



www.kdheks.gov

Our Vision – Healthy Kansans living in safe and sustainable environments.

MCH 2015



MCH 2015 Needs Assessment

Pregnant Women and Infants



www.integrativehealthinstitute.ca

Jamie S. Kim

November 6, 2009

Our Vision – Healthy Kansans living in safe and sustainable environments.





Target Population

All pregnant women and infants in Kansas

- **Infant:** A child under one year of age.
- **Pregnant woman:** A female from the time that she conceives to 60 days after birth, delivery, or expulsion of fetus. However, many states also include the preconceptional health of a women in her reproductive years (e.g., 15-44 years).

Our Vision – Healthy Kansans living in safe and sustainable environments.



Goal



ccstockton.net

To enhance the health of Kansas women and infants in partnership with families and communities.

Our Vision – Healthy Kansans living in safe and sustainable environments.



MCH 2015



MCH2010 Priority Needs are:

- Increase early and comprehensive health care before, during and after pregnancy.
- Reduce premature births and low birth weight
- Increase breastfeeding

Our Vision – Healthy Kansans living in safe and sustainable environments.



MCH 2015



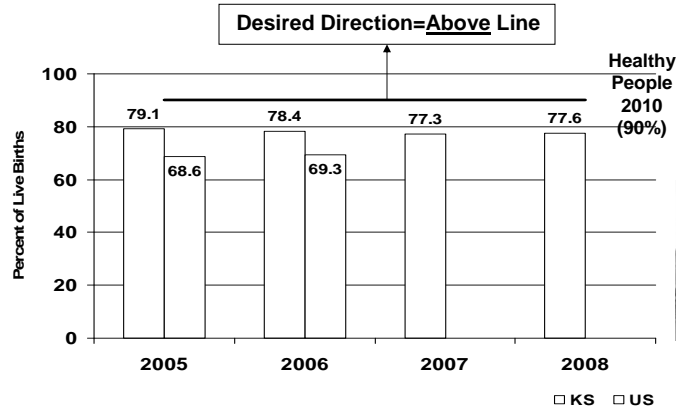
Increase early and comprehensive health care before, during and after pregnancy

Our Vision – Healthy Kansans living in safe and sustainable environments.





HP2010 16-6b. Percent of pregnant women who receive early and adequate prenatal care (APNCU)

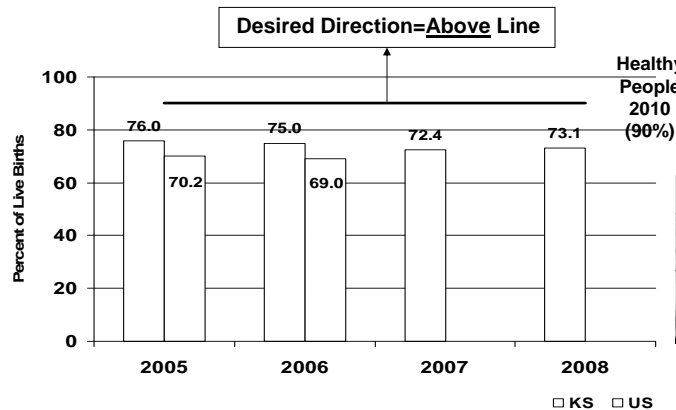


Data Source: Bureau of Public Health Informatics; National Center for Health Statistics

Our Vision – Healthy Kansans living in safe and sustainable environments.



NPM18. Percent of infants born to pregnant women receiving prenatal care beginning in the first trimester



NPM: National Performance Measure
Data Source: Bureau of Public Health Informatics; National Center for Health Statistics

Our Vision – Healthy Kansans living in safe and sustainable environments.

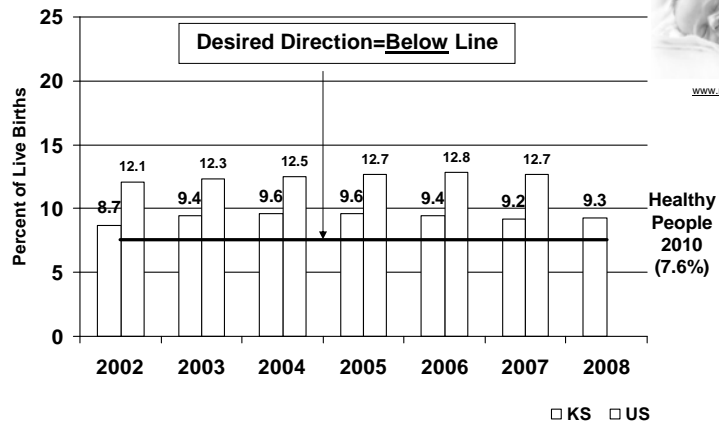


Reduce Premature Births

Our Vision – Healthy Kansans living in safe and sustainable environments.



HP2010 16-11a. Percent of total preterm births (<37 weeks)

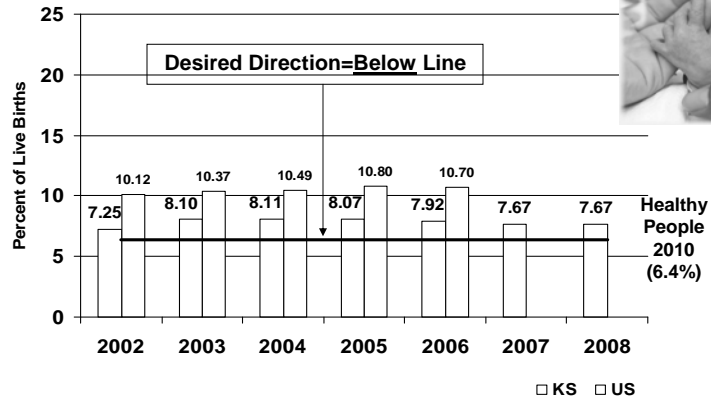


Data Source: Bureau of Public Health Informatics; National Center for Health Statistics
 Note: U.S. data for 2007 is preliminary.

Our Vision – Healthy Kansans living in safe and sustainable environments.



HP2010 16-11a. Percent of live births at 32 to 36 weeks of gestation (moderately premature and late preterm)

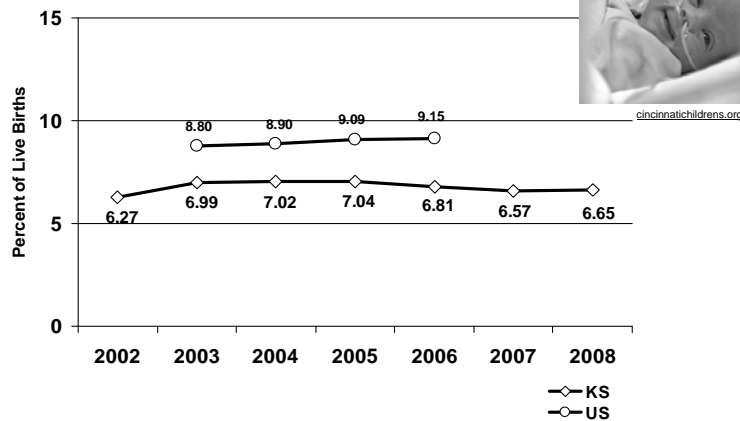


Data Source: Bureau of Public Health Informatics; National Center for Health Statistics

Our Vision – Healthy Kansans living in safe and sustainable environments.



Percent of live births at 34 to 36 weeks of gestation (late preterm)

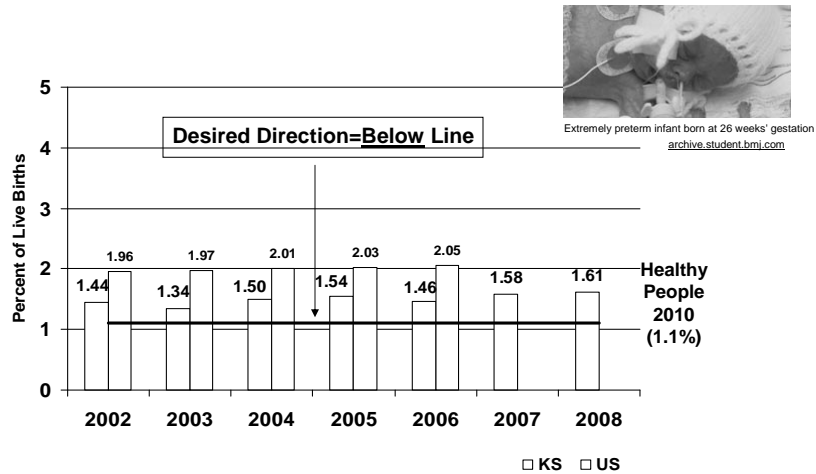


Data Source: Bureau of Public Health Informatics; National Center for Health Statistics

Our Vision – Healthy Kansans living in safe and sustainable environments.



HP2010 16-11a. Percent of live births at less than 32 weeks of gestation (very premature)

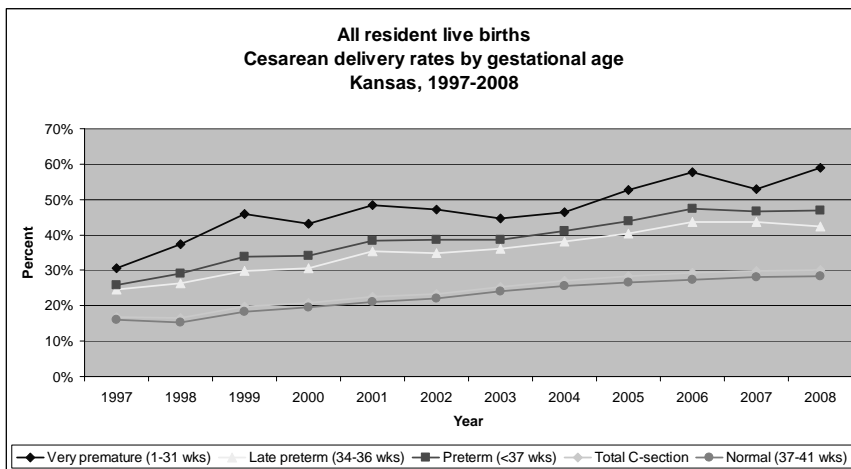


Data Source: Bureau of Public Health Informatics; National Center for Health Statistics

Our Vision – Healthy Kansans living in safe and sustainable environments.



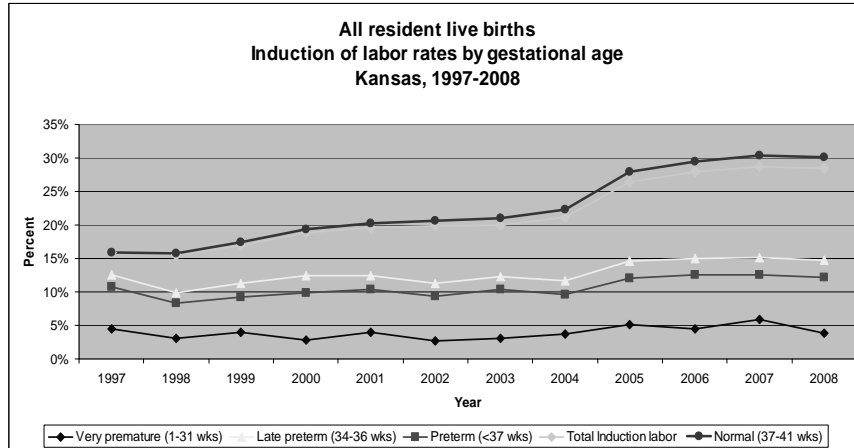
All resident live births
Cesarean delivery rates by gestational age
Kansas, 1997-2008



Our Vision – Healthy Kansans living in safe and sustainable environments.



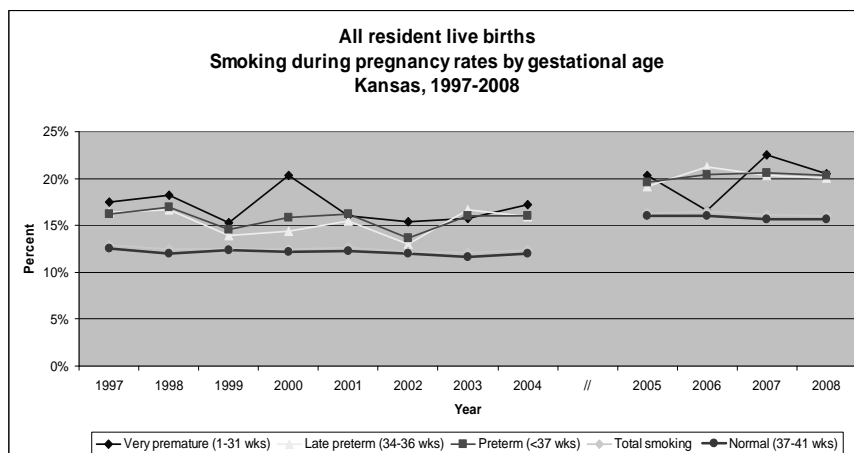
MCH 2015



Our Vision – Healthy Kansans living in safe and sustainable environments.



MCH 2015



Our Vision – Healthy Kansans living in safe and sustainable environments.



MCH 2015



Reduce Low Birthweight

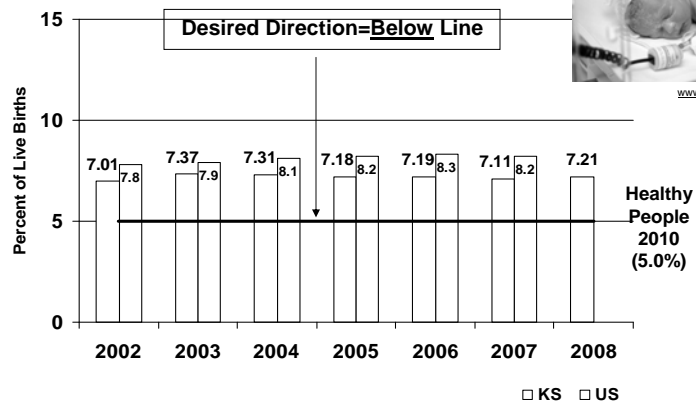
Our Vision – Healthy Kansans living in safe and sustainable environments.



MCH 2015



HSI1A. Percent of live births weighing less than 2,500 grams (LBW).

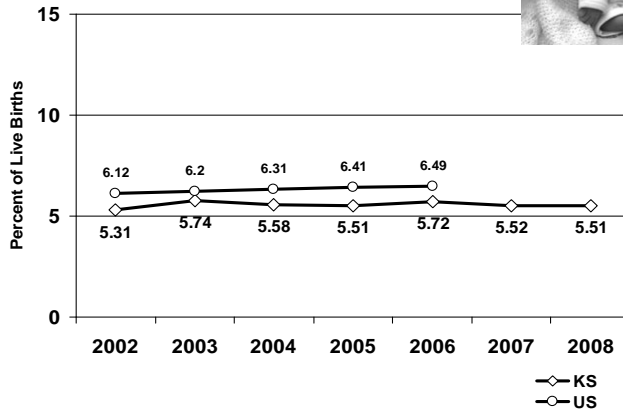


HSI: Health Status Indicator
Data Source: Bureau of Public Health Informatics; National Center for Health Statistics
U.S. data for 2007 is preliminary.

Our Vision – Healthy Kansans living in safe and sustainable environments.



HSI1B. Percent of live singleton births weighing less than 2,500 grams (LBW).

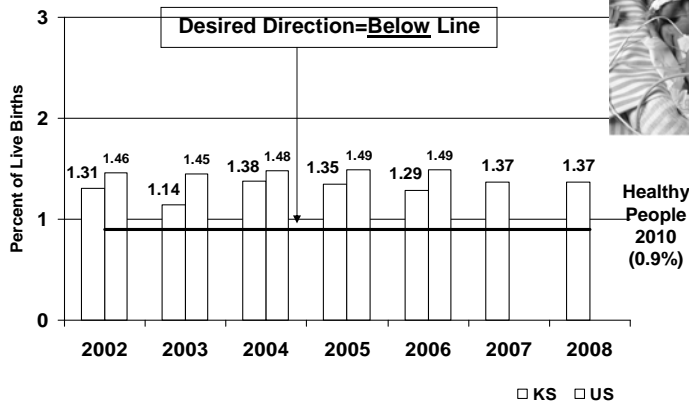


HSI: Health Status Indicator
 Data Source: Bureau of Public Health Informatics; National Center for Health Statistics

Our Vision – Healthy Kansans living in safe and sustainable environments.



HSI2A. Percent of live births weighing less than 1,500 grams (VLBW).



HSI: Health Status Indicator
 Data Source: Bureau of Public Health Informatics; National Center for Health Statistics

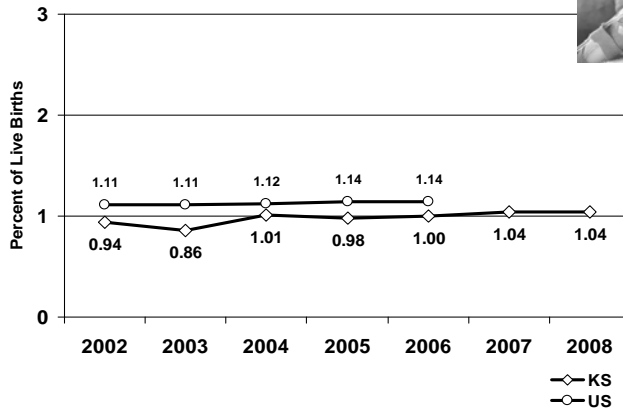
Our Vision – Healthy Kansans living in safe and sustainable environments.



HSI2B. Percent of live singleton births weighing less than 1,500 grams (VLBW).



jillstaneck.com



HSI: Health Status Indicator
 Data Source: Bureau of Public Health Informatics; National Center for Health Statistics

Our Vision – Healthy Kansans living in safe and sustainable environments.



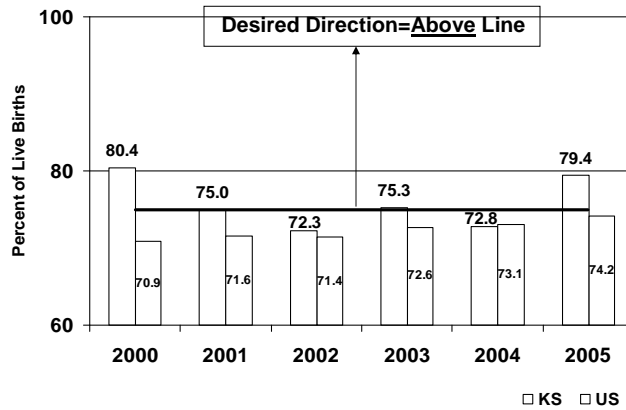
Increase Breastfeeding

Our Vision – Healthy Kansans living in safe and sustainable environments.





HP2010 16-19a. Percent of mothers who breastfed their infants in early postpartum period (at hospital discharge).



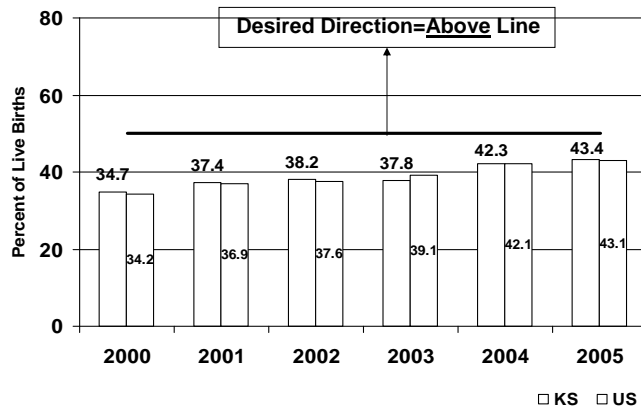
Healthy People 2010 (75%)

Data Source: National Immunization Survey (birth year)

Our Vision – Healthy Kansans living in safe and sustainable environments.



NPM 11, SPM3, HP2010 16-19b. Percent of mothers who breastfed their infants at 6 months.



dsf.health.state.pa.us

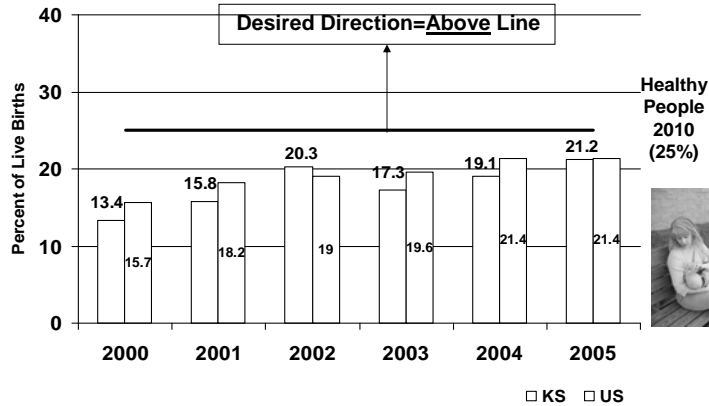
NPM: National Performance Measure; SPM: State Performance Measure
Data Source: National Immunization Survey (birth year)

Our Vision – Healthy Kansans living in safe and sustainable environments.





NPM 11, SPM3, HP2010 16-19b. Percent of mothers who breastfed their infants at 1 year.

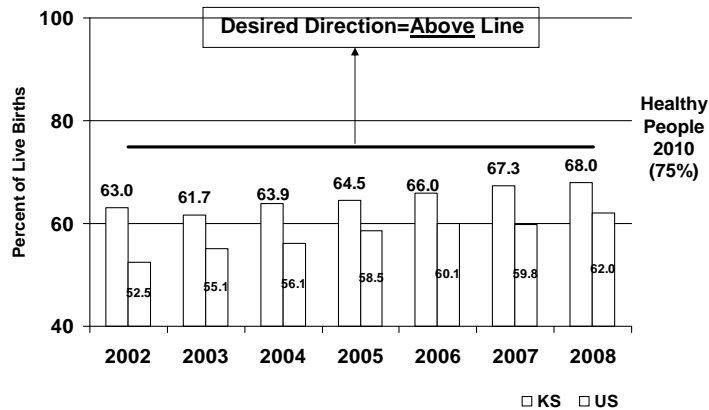


NPM: National Performance Measure; SPM: State Performance Measure
Data Source: National Immunization Survey (birth year)

Our Vision – Healthy Kansans living in safe and sustainable environments.



Percent of mothers participating in WIC who breastfeed their infants in early postpartum period (at hospital discharge).



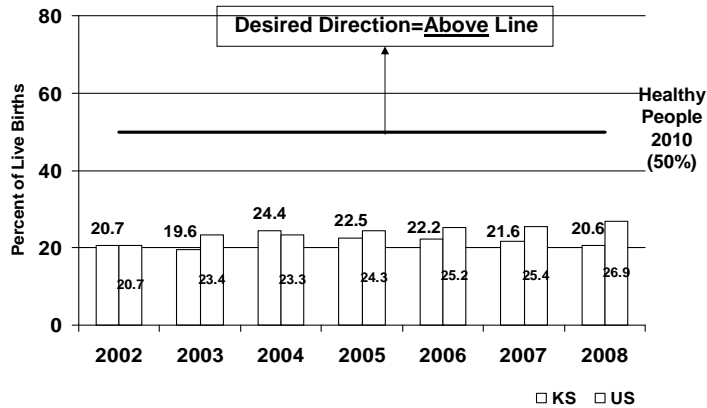
Data Source: Pediatric Nutrition Surveillance System (PedNSS)

Our Vision – Healthy Kansans living in safe and sustainable environments.





Percent of mothers participating in WIC who breastfed their infants at 6 months.

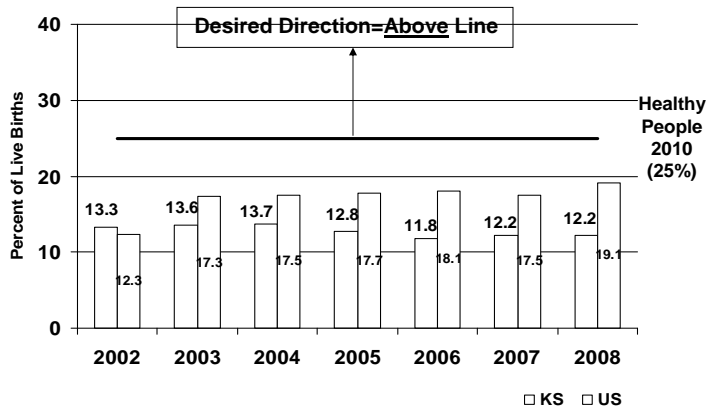


Data Source: Pediatric Nutrition Surveillance System (PedNSS)

Our Vision – Healthy Kansans living in safe and sustainable environments.



Percent of mothers participating in WIC who breastfed their infants at 1 year.



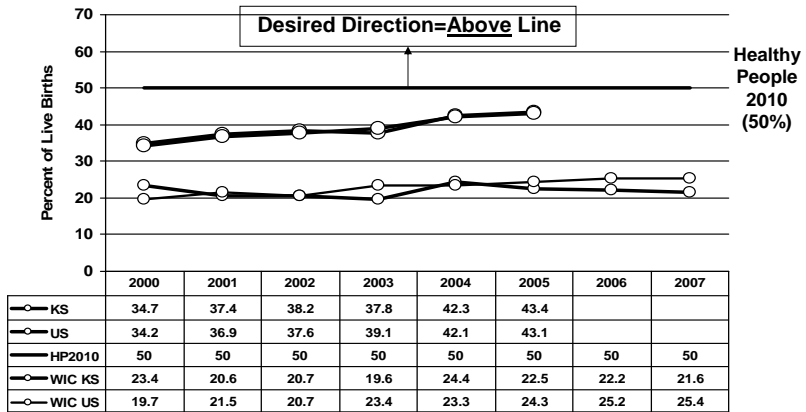
Data Source: Pediatric Nutrition Surveillance System (PedNSS)

Our Vision – Healthy Kansans living in safe and sustainable environments.





NPM 11, SPM3, HP2010 16-19b. Percent of mothers who breastfed their infants at 6 months.



NPM: National Performance Measure; SPM: State Performance Measure
 Data Source: National Immunization Survey (birth year); Pediatric Nutrition Surveillance System (PedNSS)

Our Vision – Healthy Kansans living in safe and sustainable environments.



Kansas Pregnant Women and Infants Selected Characteristics/Indicators

Our Vision – Healthy Kansans living in safe and sustainable environments.



Population Characteristics



coolest-homemade-costumes.com

Our Vision – Healthy Kansans living in safe and sustainable environments.



Population Composition by MCH groupings, Kansas and U.S., 2008

Population Group	Age in Years	KS Population Estimate	KS %	US Population Estimate	US %
Infants	<1	42,425	1.5%	4,313,132	1.4%
Children	1-4	160,104	5.7%	16,692,720	5.5%
Children	5-9	192,365	6.9%	20,065,249	6.6%
Adolescents	10-14	187,678	6.7%	20,054,627	6.6%
Women of Childbearing Age	15-44	553,481	19.8%	61,918,946	20.4%
Teen Women	15-19	96,531	3.4%	10,487,094	3.4%
Adult Women	20-44	456,950	16.3%	51,431,852	16.9%
Total MCH Population		1,136,053	40.5%	123,044,674	40.5%
Others		1,666,081	59.5%	181,015,050	59.5%
Total Population		2,802,134	100.0%	304,059,724	100%

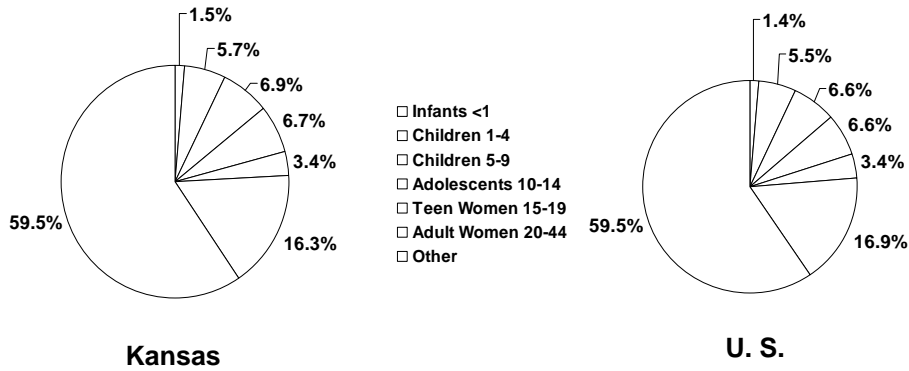
Data Source: U.S. Census Bureau

Our Vision – Healthy Kansans living in safe and sustainable environments.





MCH Populations as a Percent of Total Population, Kansas and U.S., 2008

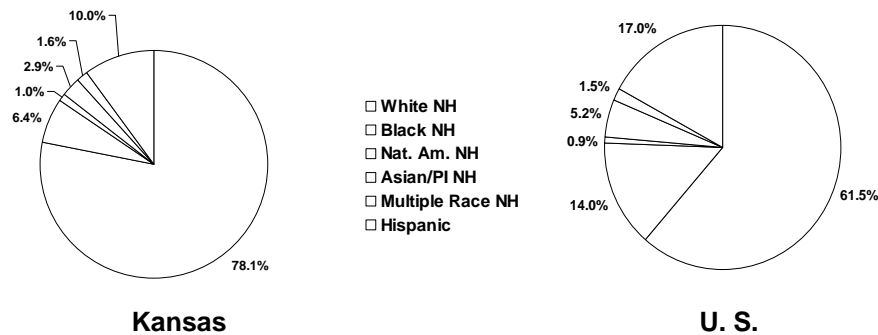


Data Source: U.S. Census Bureau

Our Vision – Healthy Kansans living in safe and sustainable environments.



Women (ages 15-44) by Race and Ethnicity, Kansas and U.S., 2008



Data Source: U.S. Census Bureau

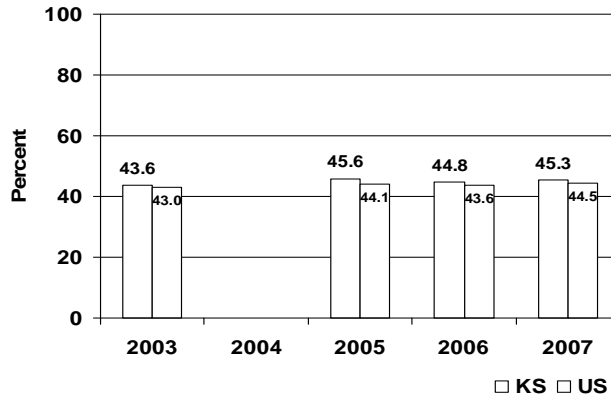
Note: The percentage distribution of U.S. Black NH, Nat. Am. NH, Asian/PI NH, and Multiple Race NH are approximations.

Our Vision – Healthy Kansans living in safe and sustainable environments.





Percent of prepregnancy overweight and obesity, Kansas and U.S., 2003-2007

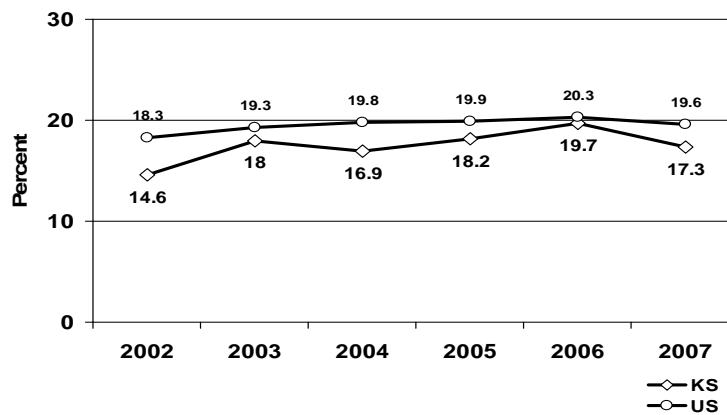


Data Source: Pregnancy Nutrition Surveillance (PNSS)

Our Vision – Healthy Kansans living in safe and sustainable environments.



Percent of women (ages 18-44) without health care coverage Kansas and U.S., 2002-2007



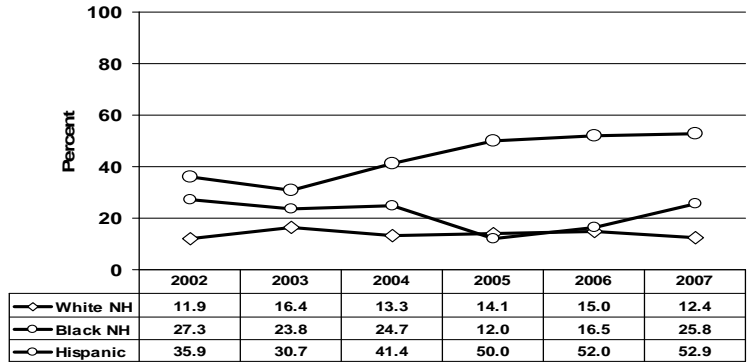
Data Source: Behavioral Risk Factor Surveillance System

Our Vision – Healthy Kansans living in safe and sustainable environments.





Percent of women (ages 18-44) without health care coverage Kansas, 2002-2007



Data Source: Behavioral Risk Factor Surveillance System

Our Vision – Healthy Kansans living in safe and sustainable environments.



Pregnancy Outcomes

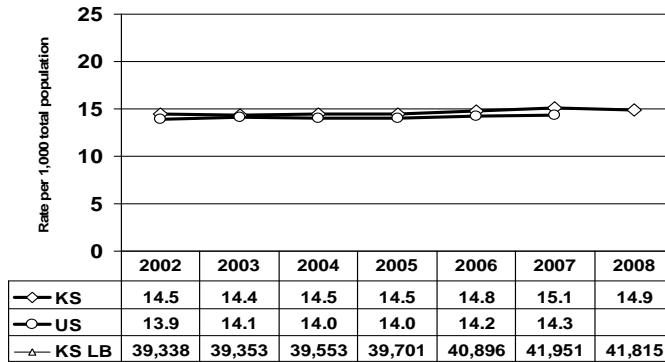


theonion.com

Our Vision – Healthy Kansans living in safe and sustainable environments.



Crude Birth Rate Kansas and U.S., 2002-2008

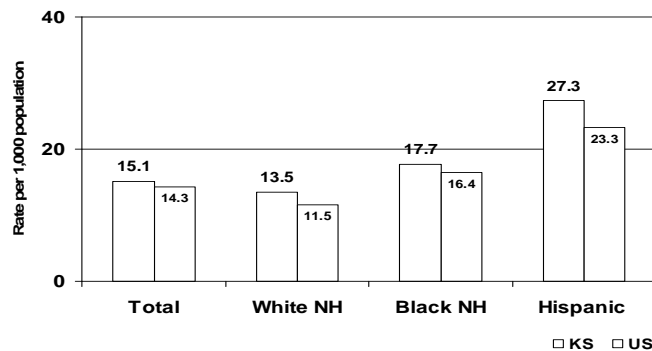


Data Source: Bureau of Public Health Informatics (residence data); National Center for Health Statistics
 Note: U.S. birth rate for 2007 is preliminary.
 LB: Number of live births

Our Vision – Healthy Kansans living in safe and sustainable environments.



Crude Birth Rate by Race/Ethnicity Kansas and U.S., 2007



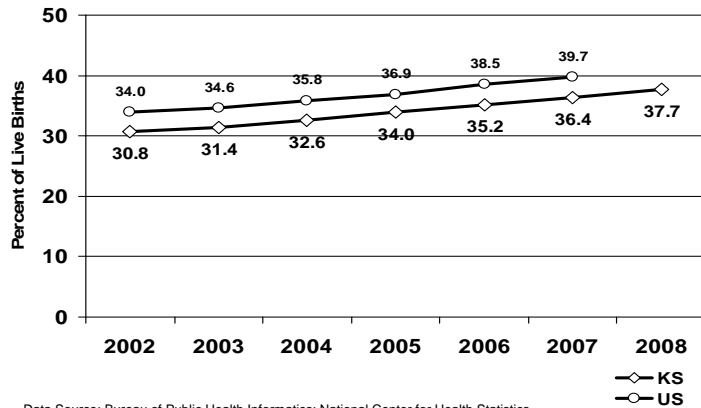
Data Source: Bureau of Public Health Informatics; National Center for Health Statistics
 Note: U.S. data for 2007 is preliminary.

Our Vision – Healthy Kansans living in safe and sustainable environments.





Percent of Births to Unmarried Women Kansas and U.S., 2002-2008

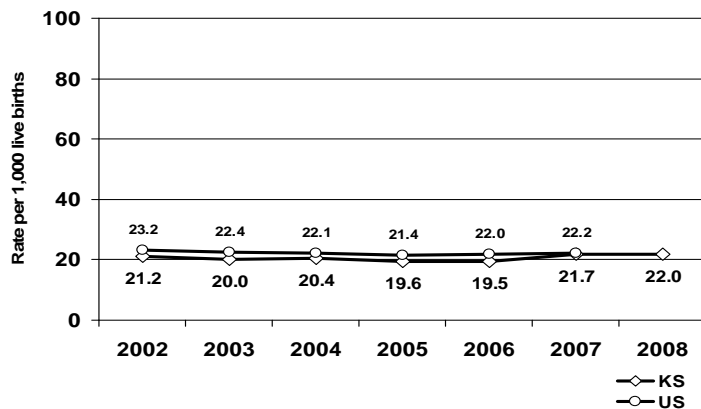


Data Source: Bureau of Public Health Informatics; National Center for Health Statistics
 Note: U.S. data for 2007 is preliminary.

Our Vision – Healthy Kansans living in safe and sustainable environments.



Teen Birth Rate (ages 15-17) Kansas and U.S., 2002-2008



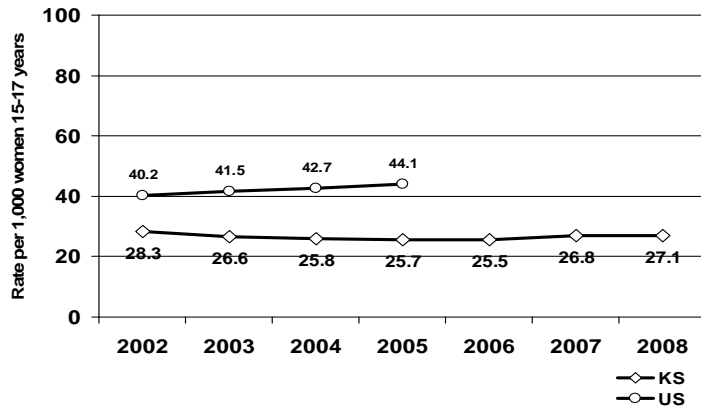
Data Source: Bureau of Public Health Informatics; National Center for Health Statistics
 Note: U.S. data for 2007 is preliminary.

Our Vision – Healthy Kansans living in safe and sustainable environments.





Teen Pregnancy Rate (ages 15-17) Kansas and U.S., 2002-2008

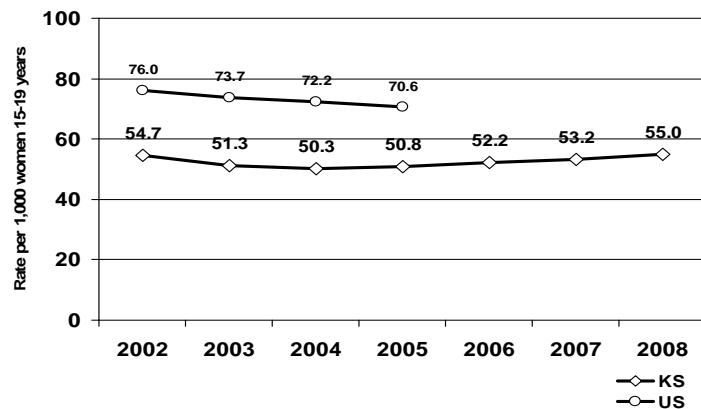


Data Source: Bureau of Public Health Informatics; National Center for Health Statistics
 Note: Teen pregnancy include the sum of live births, stillbirths and abortions.

Our Vision – Healthy Kansans living in safe and sustainable environments.



Teen Pregnancy Rate (ages 15-19) Kansas and U.S., 2002-2008

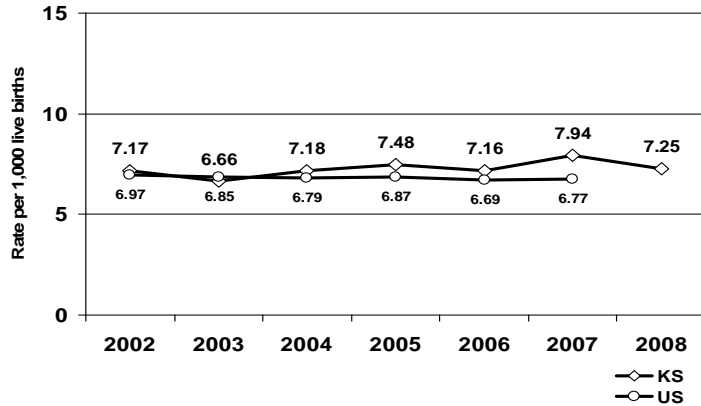


Data Source: Bureau of Public Health Informatics; National Center for Health Statistics
 Note: Teen pregnancy include the sum of live births, stillbirths and abortions.

Our Vision – Healthy Kansans living in safe and sustainable environments.



Infant Mortality Rates Kansas and U.S., 2002-2008

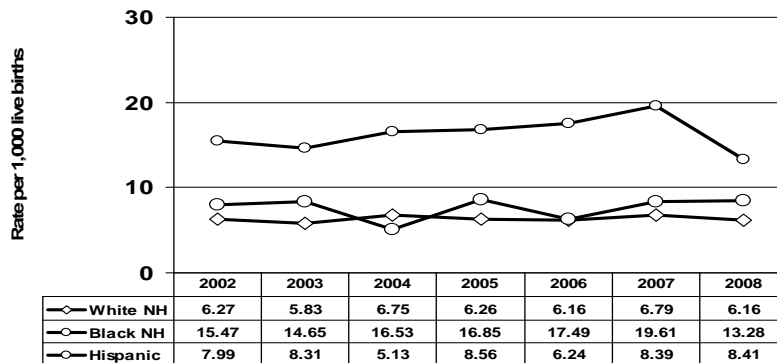


Data Source: Bureau of Public Health Informatics; National Center for Health Statistics
 Note: U.S. data for 2007 is preliminary.

Our Vision – Healthy Kansans living in safe and sustainable environments.



Infant Mortality Rates by Race/Ethnicity Kansas, 2002-2008



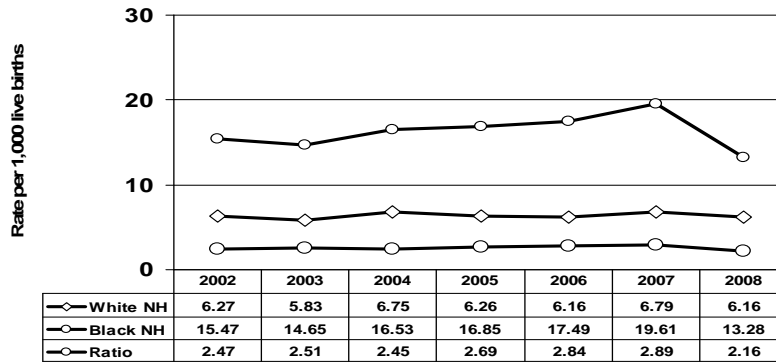
Data Source: Bureau of Public Health Informatics

Our Vision – Healthy Kansans living in safe and sustainable environments.





Infant Mortality Rates by Race/Ethnicity and Ratio Kansas, 2002-2008



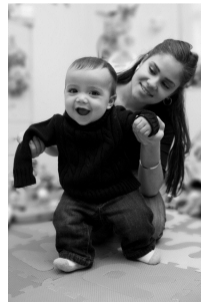
Data Source: Bureau of Public Health Informatics

Our Vision – Healthy Kansans living in safe and sustainable environments.



Kansas Pregnant Women and Infants Highlights

Based on the most recent years of available data



<http://www.datacounts.net/mch2015/>

Our Vision – Healthy Kansans living in safe and sustainable environments.



MCH 2015



Highlights

- In 2008, Women of childbearing age (15-44) and infants comprise 21.3% of Kansas population.
- In 2008, 41,815 live births occurred to Kansas residents, representing a birth rate of 14.9 per 1,000 population.
- In 2008, Geary (25.8), Seward (24.4), and Ford (21.7) counties had the highest county birth rates per 1,000 population.

Our Vision – Healthy Kansans living in safe and sustainable environments.



MCH 2015



Highlights

- In 2006, birth rates (14.8) in Kansas are among the highest (ranked 14th) in the nation (US 14.2).
- In 2006, Kansas teen (ages 15-19) birthrate (42.0) is about the same as the national average (41.9) – Ranked 17th.
- In 2008, Kansas non-Hispanic black (97.6/1,000) and Hispanic(121.1) teenagers (ages 15-19) are over twice and three times, respectively, as likely to get pregnant as non-Hispanic white teens (42.2).

Our Vision – Healthy Kansans living in safe and sustainable environments.





Highlights

- According to the 2003-2004 Kansas Women's Health Survey, 36.6% of Kansas pregnancies that result in a live birth are unintended.
- In 2008, 25.6% of Kansas women who deliver a live birth use Medicaid as a source of payment for prenatal care.
- In 2008, 73.1% of Kansas mothers receive prenatal care during the first trimester, and 77.6% receive adequate care or better during their pregnancy.

Our Vision – Healthy Kansans living in safe and sustainable environments.



Highlights

- In 2008, 16.1% of Kansas women smoke cigarettes during pregnancy (US 13.2% in 2006) and 0.2% report alcohol use.
- According to the 2007 CDC National Immunization Survey, 79.4% of Kansas mothers initiate breastfeeding after delivery and 43.4% continue breastfeeding for at least 6 months.

Our Vision – Healthy Kansans living in safe and sustainable environments.



MCH 2015



Highlights

- In 2008, 9.3% (3,873) of Kansas infants are born preterm.
- Each year, an average of 300 Kansas infants die before reaching their first birthday.
- About 2-3% of Kansas infants are born with one or more congenital anomalies, accounting for more than 20% of all infant deaths.
- 20% of U.S. mothers report experiencing physical abuse by their husband or partner during pregnancy.

Our Vision – Healthy Kansans living in safe and sustainable environments.



MCH 2015



Thank you!



currentworldnews.net

Our Vision – Healthy Kansans living in safe and sustainable environments.



MCH 2015



Jamie S. Kim, MPH
MCH Epidemiologist

Bureau of Family Health
Kansas Department of Health and Environment
jkim@kdheks.gov
785-296-6467

<http://www.kdheks.gov/c-f/index.html>

Our Vision – Healthy Kansans living in safe and sustainable environments.



www.kdheks.gov

Our Vision – Healthy Kansans living in safe and sustainable environments.